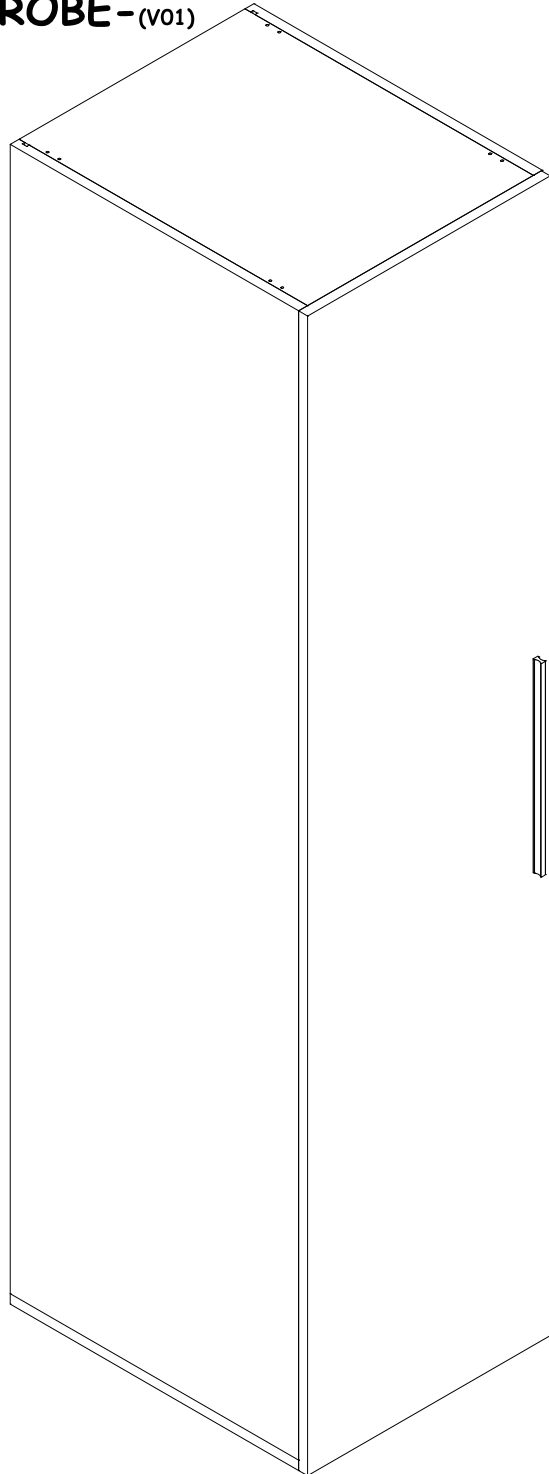


Montaj Talimatı (Assembly Instruction) -1

NEO - SINGLE WORDROBE-(v01)



NO	W	x	L	x	H
01	490	x	580	x	18
02	2002	x	580	x	18
03	306	x	463	x	8
04	454	x	575	x	18
05	1434	x	463	x	8
06	236	x	463	x	8
07	454	x	580	x	18
08	2002	x	580	x	18
09	2020	x	488	x	18
10	454	x	555	x	18

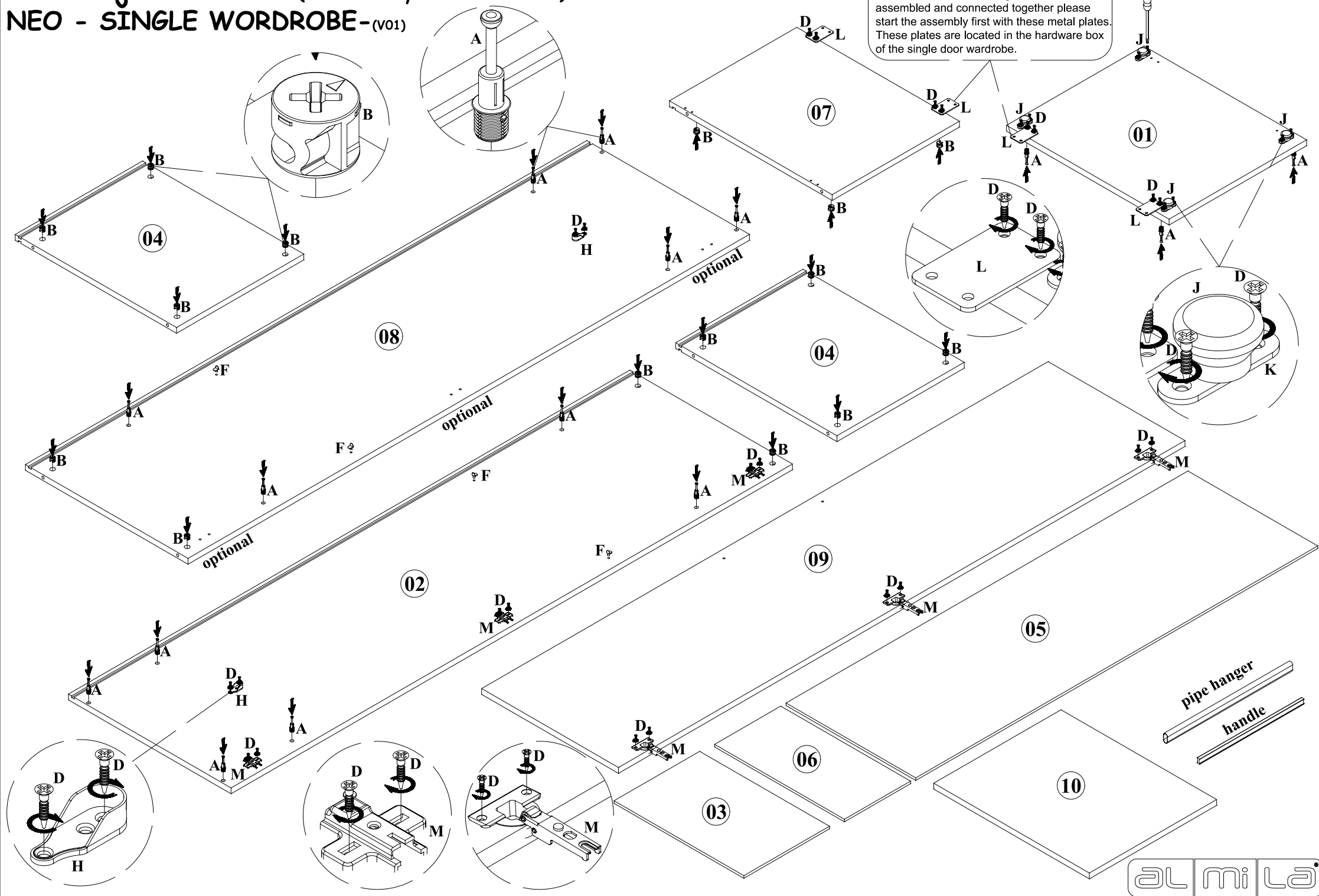


A	B	C	D
17	17	8	45
E	F	G	H
2	4	8	2
J	K	L	
4	4	4	
M			
4+4			

Montaj Talimatı (Assembly Instruction) -2

NEO - SINGLE WORDROBE-(v01)

When the single door wardrobe and the dressing table will be assembled and connected together please start the assembly first with these metal plates. These plates are located in the hardware box of the single door wardrobe.



Montaj Talimatı (Assembly Instruction) - 3

NEO - SINGLE WORDROBE - (v01)

